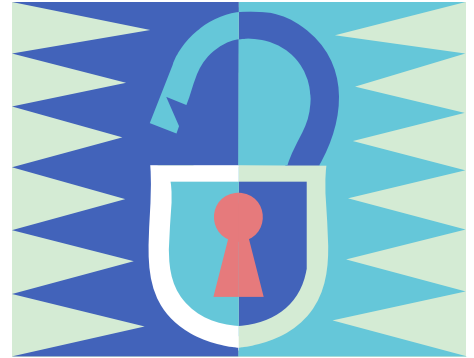


Job Descriptions

SECURITY

Immediate Supervisor: Camp Director



1. Secure all buildings - lights out and locked up - after curfew.
2. Unlock buildings that will be needed for the following day.
3. Assure that all staff and campers are in their quarters by curfew and stay inside their personal living quarters throughout the night. Keeping check on these areas all throughout the night.
4. Security checks throughout the night. Checking all sleeping areas and security of buildings.
5. Keep security log of all incidents. Log to be turned in to Camp Director each morning. Bring to the Camp Directors attention any incidents that need his immediate attention.
6. Serve as transport person for emergency trips.
7. Keep personal living quarters neat, clean and ready for inspection.
8. Be available to participate and assist with camp programs and activities as directed by the Camp Directors.

